



CircIT is the most powerful, flexible, and feature-rich, library self-checkout system available. CircIT works with all ILS systems, functions simultaneously with RFID and barcodes, and does not require proprietary hardware. CircIT includes all the features and functionality of previous versions of Tech Logic checkout software but provides unlimited HTML-based customization features.

Key Features

- CircIT is a client-server solution that is highly scalable.
- Customizable reporting, receipts, screens, and processes.
- Configure self-checkout stations to read both RFID tags and barcodes.
- Perform circulation functions, read and write RFID tags, and write SmartCards with one software program.
- CircIT powers Tech Logic's Combo Station[®] self-checkout system and Personal Payment System.
- Three different network configuration models are available.



Customize for your needs

CircIT is a dedicated web server based system that allows administrators to customize user interfaces. Customizable elements include self-service screens and transaction step order. Each self-checkout station can also be configured to offer unlimited localized interfaces at no extra cost. CircIT allows you to create custom templates to ensure a consistent look and feel for all terminals.

Read both RFID and Barcodes

CircIT communicates through a Standard Interface Protocol or SIP 2 connection to allow full functionality of checkout/checkin using barcode or RFID technology. CircIT is compatible with multiple types of hardware.

Ease of Maintenance

CircIT allows administrators to apply software updates and deploy them from a single console. A simple change can be made from the CircIT server and immediately distributed to all clients or terminals running CircIT.



UPDATING AND REPORTING FEATURES

CircIT's reporting module logs statistics from the entire library system and can be managed from the administrator's console.

CIRCIT COMPONENTS

Configure CircIT using the CircIT Administrative Tools Suite included with the CircIT application. CircIT Administrative Tools Suite is made up of three applications: Process Manager, Screen Designer, and Component Manager.

PROCESS MANAGER

Process Manager is a utility that allows the administrative user to design, implement, and modify processes that are executed by a CircIT terminal computer. Process Manager provides a graphic interface where the user creates and modifies steps in a process.

SCREEN DESIGNER

Screen Designer is a utility that allows the administrator to design and modify the CircIT terminal user interface and to set up devices such as the RFID controller or bar code reader.

COMPONENT MANAGER

Component manager is a web based utility that allows the administrator to configure CircIT terminal hardware.

CIRCIT ARCHITECTURE

CircIT is a client-server application that interfaces with the library ILS using SIP 2 protocols. It is designed with the flexibility to integrate changes in material handling technology as well as provide a means to customize functional processes, specify process event data gathering, and modify screen/receipt output by. This is all easily accomplished by your staff.

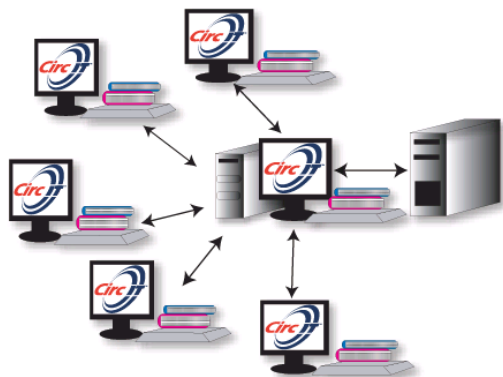
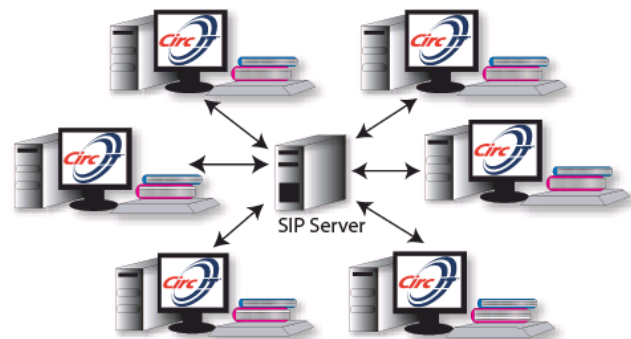
CIRCIT IS SCALABLE

As a client-server implementation, each terminal pulls its data from the server or host station so any updates made on the server or host station will propagate to each terminal. The single CircIT host station architecture is structured so that one host station acts as both the web server and database server and provides administrative access to all terminal applications in the library system. If the number of CircIT terminal applications attaching to the single host station will be greater than five, refer to CircIT system requirements for more information. CircIT is also flexible, allowing a single terminal/server or combo PC to be used at a single location.

Three different network configuration models are available with CircIT

STANDALONE CONFIGURATION

The entire CircIT software application is installed on all terminal PCs. This configuration allows for multiple terminals without a central host station. Each station requires network connectivity to the SIP II server. Refer to CircIT system requirements for more information.



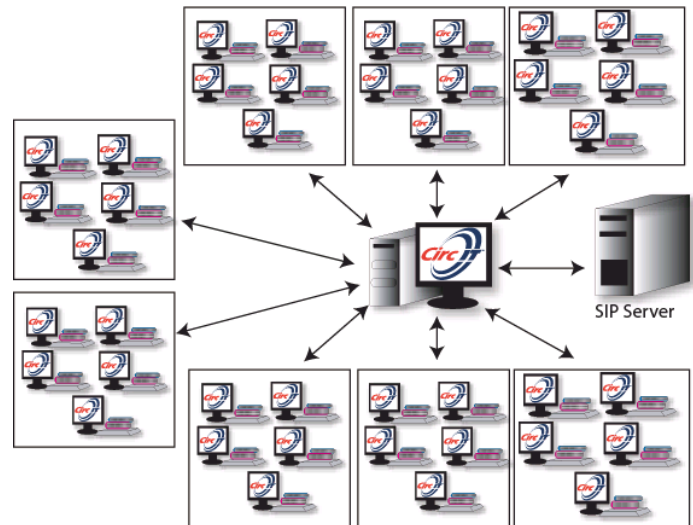
BRANCH HOST CONFIGURATION

CircIT terminal applications connect to a Branch Host station. The full CircIT software application is installed and configured on the Branch Host station. Terminal clients only need the terminal application installed. The Branch Host station contains configuration information that can be managed using the CircIT administrative tools from any location with access to the Branch Host station.

Updates to CircIT terminals are easy; one change updates all terminals connected to the Branch Host station. This configuration supports up to five terminals, each terminal requires network connectivity to the Branch Host station. The Branch Host station requires network connectivity to the SIP II server. Refer to CircIT system requirements for more information.

SERVER CONFIGURATION

The CircIT server hosts multiple clients across multiple branches. Every terminal's administration / configuration settings are stored on the CircIT server. Settings can then be managed using the administrative tools from any location with access to the CircIT server. Dedicated network connectivity is required between the terminals and the CircIT server. Network connectivity is also needed between the library's SIP server and the CircIT server. Refer to CircIT system requirements for more information.



FASTER CHECKOUT

Patrons can now complete a checkout process for up to 40 items in as few as four screens. We streamlined the checkout process by combining the scan items screen, checked out screen, and the deactivation of the theft bit into one complete transaction. Under normal circumstances, patrons can now confidently check out 4-8 items at one time in less than 2.5 seconds. All items display until the finish button is pressed so that patrons can see their items even when they are not on the antenna.

Barcode Checkout works virtually the same way. Patrons are able to checkout as many items in one transaction as desired and all other screens and designs are exactly the same. This allows a Library to checkout RFID and barcode items using the same process and application.

CircIT's check in process was designed to specifically allow Library staff to be able to process a greater amount of items in shorter amount of time. In the past, the deactivation of the security theft bit and the check in of an item was done in two different areas; with separate screens. In CircIT, all you have to do is set an item on the pad and it is instantly checked in. The theft bit is immediately activated. This takes less than 1 second to execute; 1 second for *all items* placed on and detected by the antenna.

The process to write a barcode number to a RFID tag is very simple. Place a RFID tag or a book with a RFID tag inside of it on the antenna, scan the barcode on the book and the software automatically writes the barcode number to the RFID tag and turns the security on.



CircIT System Requirements

The hardware and software requirements for CircIT are provided as general guidelines. There are many factors that can affect these requirements, including but not limited to:

- The number of terminal applications the CircIT implementation will support.
- Performance of the network connection between the terminals and the host station.
- Dependency of CircIT on Microsoft SQL Server 2000® SP4 or Microsoft SQL Server 2005® with the latest updates.
- The number of host stations involved and how they are configured.
- Performance of your servers and network.
- Performance of the SIP II server.

CircIT Combo Station/Branch Host Station System Requirements

Component	Requirement
Computer/processor	Dual Core, Pentium D, or Core 2 Duo or equivalent
Memory (RAM)	2 GB+
Hard disk	30 MB+ of space needed depending on images used. Not including space for other requirements.
Operating System	Microsoft Windows XP® Professional SP2
Database Management System	Microsoft® SQL Server™ 2005 Express Edition
Additional Software Components	Microsoft IIS 5.0 or later .NET Framework version 1.1 SP1 .NET Framework version 2.0 MS Internet Explorer 6.0 SP1 or later Microsoft Message Queuing (MSMQ) Adobe Flash Player Software version 8.0 or later
Number of Terminals	The recommended number of terminals per combo station/branch host station is a maximum of five.
Networking	TCP/IP connectivity to SIP II server and terminals if it is set up as a branch host

CircIT Terminal Application System Requirements

Component	Requirement
Computer/processor	Pentium 4 2.0 GHz+, Pentium D, Core2 or equivalent
Memory (RAM)	1 GB+
Hard disk	50 MB of space needed. Not including space for other requirements.
Operating System	Microsoft Windows XP® Professional SP2 or Windows 2000® Professional SP4
Additional Software Components	.NET framework version 1.1 SP1 MS Internet Explorer 6.0 SP1 or later Microsoft Message Queuing (MSMQ) Adobe Flash Player Software version 8.0 or later
Networking	TCP/IP connectivity to the branch host or CircIT server

CircIT Server System Requirements

Component	Requirement
Computer/processor	Xeon or equivalent
Memory (RAM)	2 GB+
Hard disk	30 MB+ of space needed depending on images used. Not including space for other requirements.
Operating System	Windows 2000 Server®, with the latest service pack or Windows 2003 Server® with the latest service pack
Database Management System	Microsoft® SQL Server™ 2005 or Microsoft® SQL Server™ 2000
Additional Software Components	.NET framework version 1.1 SP1 Microsoft Message Queuing (MSMQ) Microsoft IIS 6.0 (included with Windows 2000 server) or later
Networking	TCP/IP connectivity to the SIP II server and terminals



**Standalone Configuration
Ordering Information**

	Equipment	Item Number (Tech Logic Provided Hardware)	Item Number (Customer Provided Hardware)
Combo PC	17" ELO Monitor w/o speakers	25012872	n/a
	PC w/Keyboard & Mouse	25012266	n/a
Host CircIT Application		25013133	n/a
CircIT/Terminal Application		25013134	n/a
Installation			
Remote		35005738	35005742
On-Site		35005738	35005742
Travel & Expenses		25000001	25000001
Support	Annual contract per Terminal Application	25013136	25013132

**Server Configuration
Ordering Information**

	Equipment	Item Number (Tech Logic Provided Hardware)	Item Number (Customer Provided Hardware)
Connectivity test utility		n/a	n/a
Windows Server		25012276	n/a
Terminal PC		25012265	n/a
CircIT Host Application		25013133	n/a
Terminal Application		25013134	
Installation			
Remote		35005738	35005742
On-Site		35005738	35005742
Travel & Expenses		25000001	25000001
Support	Annual contract per Terminal Application	25013136	25013132

**Branch Network Configuration
Ordering Information**

	Equipment	Item Number (Tech Logic Provided Hardware)	Item Number (Customer Provided Hardware)
Host Station PC	17" ELO Monitor w/o speakers	25012872	n/a
	PC w/Keyboard & Mouse	25012266	n/a
Terminal PC	17" ELO Monitor w/o speakers	25012872	n/a
	PC w/Keyboard & Mouse	25012265	n/a
Host CircIT Application		25013133	n/a
CircIT/ Terminal Application		25013134	n/a
Installation			
Remote		35005738	35005742
On-Site		35005738	35005742
Travel & Expenses		25000001	25000001
Support	Annual contract per Terminal Application	25013136	25013132



Product Line: Circulation Software

