



# CircIT Software

CircIT is the most powerful, flexible, and feature-rich library self check-out system available. CircIT works with most ILS systems, functions simultaneously with RFID and barcodes, and does not require proprietary hardware. CircIT includes all the features and functionality of previous versions of Tech Logic self check-out software but provides unlimited HTML-based customization features.

## Key Features

- Client-server solution that is highly scalable.
- Customizable reporting, receipts, screen, and processes.
- Configurable self check-out stations that read both RFID tags and barcodes.
- Performs circulation functions, reads and writes RFID tags with one software program.
- Powers Tech Logic's self check-out Combo Station® system and Personal Payment System.
- Utilizes a PCI Compliant/PA-DSS validated payment application (CircIT 2011).

CircIT is a dedicated web-based server system that allows administrators to customize user interfaces. Customizable elements include self-service screens and transaction step order. Each self check-out station can also be configured to offer unlimited localized interfaces at no extra cost. CircIT allows you to create custom templates to ensure a consistent look and feel for all clients.

CircIT allows administrators to apply software updates and deploy them from a single console. A simple change can be made from the CircIT server and immediately distributed to all clients running CircIT.

## RFID and Barcode Technology

CircIT communicates through a Standard Interface Protocol (SIP) connection to allow full functionality of check-out/check-in using barcode or RFID technology. CircIT is compatible with multiple types of hardware.

## Components

CircIT Administrative Tools Suite is configurable. Administrative Tools is made up of three applications: Process Manager, Screen Designer, and Component Manager.

### *Process Manager*

Process Manager allows the administrative user to design, implement, and



[www.tech-logic.com](http://www.tech-logic.com)

1818 Buerkle Road ♦ White Bear Lake, MN 55110 ♦ Tel: 651.747.0492 ♦ Fax: 651.747.0493



# CircIT Software

modify processes that are executed by a CircIT client. Process Manager provides a graphic interface where the user creates and modifies steps in a process.

### ***Screen Designer***

Screen Designer allows the administrator to design and modify the CircIT client user interface and set up devices such as the RFID or barcode reader.

### ***Component Manager***

Component Manager is a web-based tool that allows the administrator to configure CircIT client hardware.

## **PCI Compliance**

CircIT 2011 software facilitates the library's deployment of a validated payment processing module that is verifiably compliant under PA DSS guidelines. PA DSS is the Payment Application Data Security Standard of the payment card industry. CircIT does not store any CHD (card holder data) post authorization. Thus CircIT is not required to be PA DSS validated. Instead, CircIT allows PAYware PC, a PA DSS compliant payment engine module, to handle all acquisition and processing of the CHD.

PAYware PC works with the following list of credit card processors:

- BAMS FACTS
- Chase Paymentech - Tampa
- ECHO
- Elavon
- Fifth Third St. Pete
- First Data Atlanta
- First Data North
- First Data Omaha
- Global Payments East
- Heartland Payment Systems
- RBS WorldPay
- TSYS

## **CircIT Architecture**

As a client-server implementation, each client pulls its data from the server or host station so any updates made on the server or host station circulates to each client. The single CircIT host station architecture is structured so that one host station acts as both the web server and database server and provides administrative access to all clients in the library system. CircIT is flexible, allowing a single client or combo PC to be used at a single location.

[www.tech-logic.com](http://www.tech-logic.com)

1818 Buerkle Road ◊ White Bear Lake, MN 55110 ◊ Tel: 651.747.0492 ◊ Fax: 651.747.0493



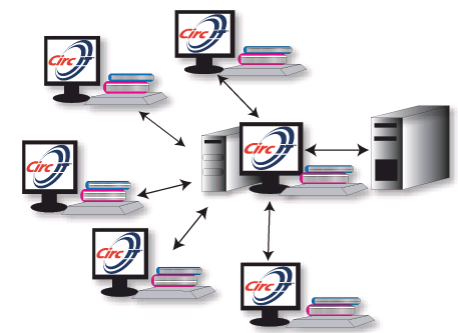
# CircIT Software

## Network Configurations

### *Branch Host Configuration*

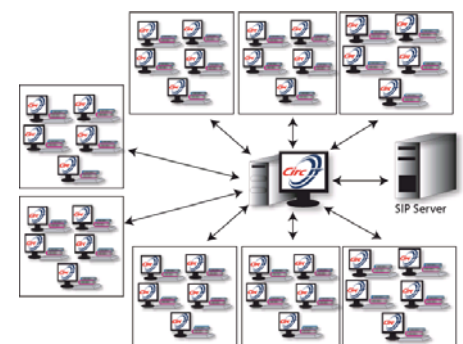
CircIT client applications connect to a branch host station. The full CircIT software application is installed and configured on the branch host station. Clients only need the client application installed. The branch host station contains configuration information that can be managed using the CircIT Administrative Tools from any location with access to the branch host station.

Updates to CircIT clients are easy; one change updates all clients connected to the branch host station. This configuration supports up to five clients, and each client requires network connectivity to the branch host station. The branch host station requires network connectivity to the SIP 2 server.



### *Server Configuration*

The CircIT server hosts multiple clients across multiple branches. Every client's administration configuration settings are stored on the CircIT server. Settings can then be managed using the Administrative Tools from any location with access to the CircIT server. Dedicated network connectivity is required between the clients and the CircIT server. Network connectivity is also needed between the library's SIP server and the CircIT server.



## Faster Check-Out

Patrons can now complete a check-out process for up to 40 items in as few as four screens. Tech Logic streamlined the check-out process by combining the scan items screen, check-out screen, and the deactivation of the theft bit into one complete transaction. Under normal circumstances, patrons can check out four to eight items at one time, in less than 2.5 seconds. Barcode check-out works the same way. Patrons are able to check out as many items in one transaction as desired and all other screens and designs are exactly the same. This allows a library to check out RFID and barcode items using the same process and application.

[www.tech-logic.com](http://www.tech-logic.com)

1818 Buerkle Road ♦ White Bear Lake, MN 55110 ♦ Tel: 651.747.0492 ♦ Fax: 651.747.0493



## Faster Check-In

CircIT's check-in process was designed to specifically allow library staff to be able to process a greater amount of items in shorter amount of time. With CircIT, placing an item on the pad instantly checks it in and the theft bit is immediately activated, which takes less than 1 second to execute.

## Tag Programming

The process to write a barcode number to an RFID tag is simple. Place an RFID tag on the antenna, scan the barcode on the item, and the software automatically writes the barcode number to the RFID tag and turns the security on. The tag programming (write tags) screen is used to write the barcode numbers to the RFID tags.

## Ordering Information

### Branch Network Configuration

	Equipment	Item Number Tech Logic Provided Hardware	Item Number Customer Provided Hardware
Host Station PC	17" ELO Monitor w/o speakers	25012872	n/a
	PC w/Keyboard & Mouse	25012266	n/a
Client PC	17" ELO Monitor w/o speakers	25012872	n/a
	PC w/Keyboard & Mouse	25012265	n/a
CircIT Host Application		25013133	n/a
CircIT/ Client Application		25013134	n/a
<b>Installation</b>			
Remote		35005738	35005742
Onsite		35005738	35005742
Travel & Expenses		25000001	25000001
Support	Annual contract per client application	25013136	25013132

### Server Configuration

	Equipment	Item Number Tech Logic Provided Hardware	Item Number Customer Provided Hardware
Connectivity Test Utility		n/a	n/a
Windows Server		25012276	n/a
Client PC		25012265	n/a
CircIT Host Application		25013133	n/a
Client Application		25013134	
<b>Installation</b>			
Remote		35005738	35005742
Onsite		35005738	35005742
Travel & Expenses		25000001	25000001
Support	Annual contract per client application	25013136	25013132

[www.tech-logic.com](http://www.tech-logic.com)

1818 Buerkle Road ◊ White Bear Lake, MN 55110 ◊ Tel: 651.747.0492 ◊ Fax: 651.747.0493